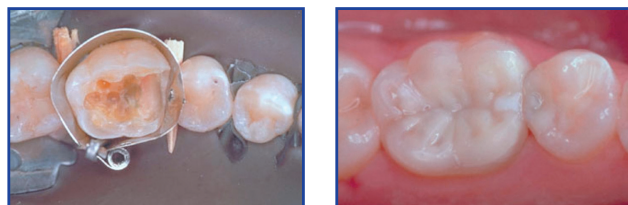


AutoMatrix®

Retainerless Matrix System

Ideal for larger preparations and those that have buccal or lingual extensions.



Retainerless System

- Clear field of vision, access for quadrant work, better patient comfort

Conical formation

- Better anatomical adaptation helping to avoid restorative overhang

Torque control of Automate® III tightening device

- Limits over-tensioning, less adjustment needed

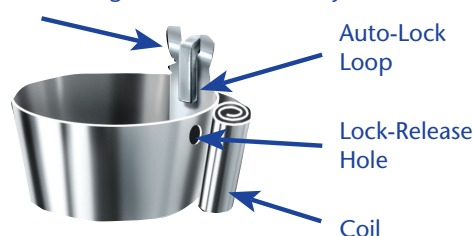
Pre-loaded bands

- Save time, less steps

Four different matrix bands are available for all situations:

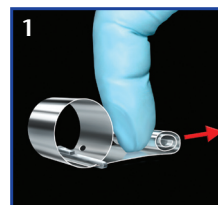
Type	Narrow/Regular (NR)	Medium/Thin (MT)	Medium/Regular (MR)	Wide/Regular (WR)
Height (mm)	4.76	6.35	6.35	7.94
Thickness (mm)	0.05	0.038	0.05	0.05
Clinical uses	short bicuspid & molars	bicuspid/molars	bicuspid/molars	long molars

Thin-Gauge Bands Identified by Notch Here



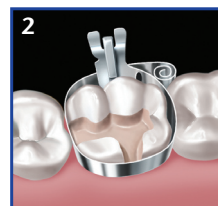
Step by Step

To properly fit tooth, matrix should be slightly larger than occlusal circumference.



Preparation

Unroll coil slightly with finger. Slide the auto-lock against the coil.



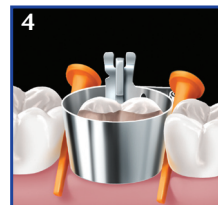
Placement

Position it with the auto-lock loop at the center of the buccal or lingual... or the remaining section of standing tooth.



Tightening

Insert Automate III tip into coil and rotate knurled handle clockwise. After 2 to 3 clicks, stop.



Tooth Restoration

Place anatomical wedges as desired. Burnish contact areas as needed. Restore tooth.



Release and Removal

Rotate winding tip of Automate III counterclockwise (1/4 turn). To open the matrix, clip projecting end of Auto-Lock loop.

ORDERING INFORMATION

AutoMatrix® Introductory Package 624.22.501
96 Bands (24 of each size)
1 Automate® III Tightening Device, Snippers

AutoMatrix® Refills (72 pieces each)

NR: Narrow-Regular	624.22.511
MT: Medium-Thin	624.22.510
MR: Medium-Regular	624.22.512
WR: Wide-Regular	624.22.513

AutoMatrix® Accessories

Snippers	624.22.601
Automate® III Tightening Device	624.22.602
Extra Shaft Assembly	624.22.603
Repair Set for Snippers	963010



DENTSPLY DeTrey GmbH
De-Trey-Str. 1
78467 Konstanz
Germany
www.dentsply.de

For better dentistry

DENTSPLY