

2024
Orthodontic
Product Catalog

Dentsply
Sirona

SureSmile





SURESMILE® SOLUTIONS

SureSmile Software	2
SureSmile Simulator and DS Core.....	2
SureSmile Full-Service Aligners	3
SureSmile Retainers	4
SureSmile Robotically Bent Wires.....	4
SureSmile IDB	5
SureSmile In-Office Aligners	5
Imaging / Primescan & Primescan Connect	6
Digital X-ray / Axeos.....	7



SURESMILE® VPRO™

SureSmile VPro Vibration Device	9
SureSmile VPro Mouthpiece.....	9
SureSmile VPro USB Data Cable.....	9
SureSmile VPro Charging Block.....	9



PATIENT CARE

Retainer Brite Dental Appliance Cleaner.....	11
Sonic Cleaner.....	11
Therapy Wafers.....	11
Chewies Aligner Tray Seaters.....	12
Retainer Retrievers.....	12
Appliance Remover Tools.....	12



ATTACHMENT BONDING

Caulk® 34% Tooth Conditioner.....	14
DeTrey® Conditioner 36.....	14
Prime&Bond® active®	14
Prime&Bond® universal®	15
SmartLite® Pro LED Curing Light.....	15
Compules® Tips Gun	15
TPH Spectra® ST HV.....	16
TPH Spectra® ST LV.....	16
Ceram.x Spectra® ST HV.....	17
Ceram.x Spectra® ST LV	17
Neo Spectra® ST HV.....	18
Neo Spectra® ST LV.....	18
Enhance® Finishing System	19
Midwest® Trimming and Finishing Carbide Burs.....	19



IPR

SpaceFile IPR.....	21
Flexview IPR Strips	22
Diamond IPR Strips.....	22
Qwikstrip IPR.....	23
Serrated IPR Strips	23
IPR Gauge Set	23



PLASTICS

Plastic Selection Chart	25
Essix PLUS: Retainers and Aligners	26
Essix ACE: Aligners and Retainers	26
Essix C+: Aligners and Retainers for Bruxers	27
Essix TRAY RITE: Whitening Trays	27
Essix Dual Laminate: TMJ Splints.....	28
Essix A+: Bite Planes	28
Essix Nightguard Laminate: Bruxism Appliances	29
Essix Laminated Sports Mouthguard Material.....	29
Essix Pontics	30



TRIMMING

Appliance Trimming Kit.....	32
Accentuator Tool.....	32
Cordless Dremel.....	32
Essix Lab Knife.....	32
Scissors and Shears	33
Laboratory Discs.....	34
Sports Mouthguard Trimming Bur.....	35
Finishing Liquid	35
Burs & Trimming Wheel.....	35
Micromotor	36
Polishing Brushes & Border Polishers.....	36
Trim-Rite Release Agent	37
Freeze Spray Coolant.....	37



THERMOFORMING

Drufomat Scan Pressure Machine.....	39
Pressure Polymerization Insert.....	39
Granules	39
Funky Tool.....	39

Product Returns Terms & Conditions:

All returns must receive a RETURN MATERIALS AUTHORIZATION (RMA) number from the Dentsply Sirona Customer Service Department prior to shipment. This RMA number must be clearly noted on the outside of the shipping carton. If products are shipped without an RMA, the customer will be charged a processing fee.

Terms and Conditions apply. Product availability varies by market. Visit us online at dentplysirona.com or contact your local customer care for more details.

Visit us online at dentplysirona.com where you can shop our full line of products, download how-to-guides, get information on patient care and clinical education, watch videos and more.

Note: Not all products may be available for sale in your market. Please contact your customer sales representative with any questions.



SureSmile[®]
Solutions



SureSmile®

Through the course of treatment and beyond, you have the support from DS with over 100 years in oral healthcare solutions. SureSmile has more than 30 years of experience providing orthodontic treatment solutions. When you choose SureSmile, you can rest assured knowing you have the backing of decades of dental experience. Over 1 million people have transformed their smiles with SureSmile technology.¹

SureSmile® Software

The SureSmile system is powered by a robust, clinically driven digital treatment planning platform. It ensures the clinician is in control of treatment, and is designed to enable optimal patient customization. The SureSmile Aligner software is intuitive and offers a thorough review of each patient's case with a wide range of different tools. Our software is browser-based, so you can review your treatment plans whether you're at your practice, at home, or traveling. It is simple to upload digital impression, patient photos and optional X-rays and CBCT files to allow for personalization for even the most challenging cases.

- Clinically Powered, Clinician Controlled
- Versatile, Convenient and Customized



SureSmile® Simulator powered by DS Core™

The SureSmile Simulator², powered by DS Core, empowers dental professionals to transform treatment conversations. By utilizing Primescan or other compatible scan data, the Simulator generates personalized 3D visualizations of potential smiles following SureSmile Clear Aligner Treatment to help patients visualize and commit confidently to start their smile transformation.

Once you receive commitment from your patient, you can initiate the SureSmile aligner treatment, including uploading photo records, scan data and x-rays directly from DS Core to SureSmile.

DS Core fuels the SureSmile Simulator with the data-driven capabilities you need. Choose an account subscription option to match your practice's needs.

- Enhance patient communication & engagement
- Educational Excellence
- Case Evaluation Support
- Centralize collaboration with partners & labs
- Connect your equipment for efficient workflows



¹ Over 1 million patients have been treated with SureSmile® technology.

² Requires user to have a DS Core subscription and compatible IOS. Displayed results are a simulation of potential aligner treatment and not a prescribed treatment plan, which must be directed by the doctor and complied with by the patient. Actual treatment outcomes may differ substantially.

SureSmile® Full-Service Aligner

SureSmile Aligners are made by experts using the latest technology and proven materials. Precise processing of the data and thorough quality control ensure outstanding fit, excellent durability, and aligners so transparent that they're practically invisible. Each treatment proposal undergoes rigorous quality checks and is validated by a clinical expert from our Digital Lab to ensure an accurate treatment plan for your patients. No refinements were required on 3 of 4 SureSmile Aligner cases³. Factors include the use of SureSmile's high performance material, your choice of trimline, and minimal customizable attachments.

- Predictable results
- Customizable trimline
- Enhanced treatment planning



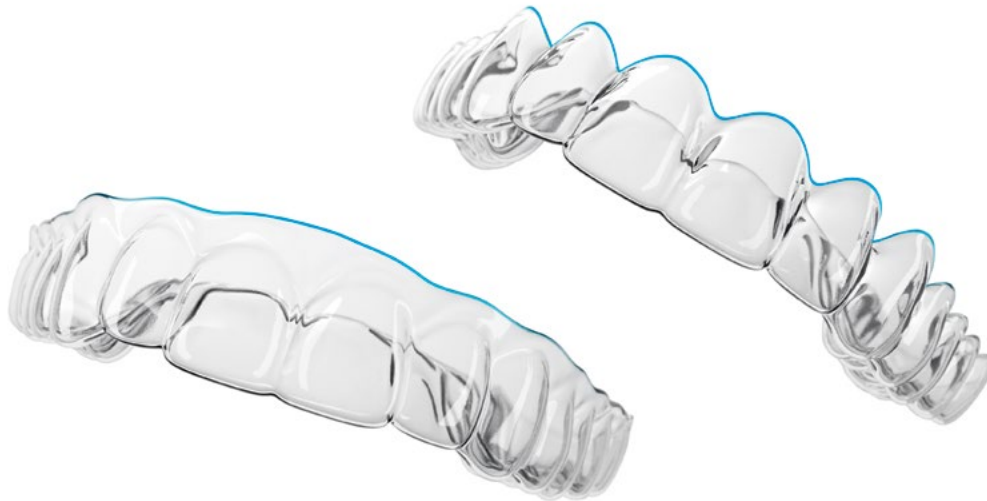
Select the SureSmile Aligner package that best suits each patient:

COMPLETE - Total Plan

Clear aligners with refinements throughout treatment time up to 3 years from aligner production with flat-rate pricing, including SureSmile Aligner Patient Kit, SureSmile VPro and the SureSmile Whitening Kit⁴.

SELECT - Ala Carte Plan

Ideal for less complex cases, only pay for the number of aligners your need. Includes the SureSmile Aligner Patient Kit and SureSmile Whitening Kit⁴. Optional SureSmile VPro for an additional fee.



³ SureSmile® Aligner Refinement Data, data on file 2020. Keim/Vogels/Vogels, 2020 JCO Study of Orthodontic Diagnosis and Treatment Procedures (JCO/October 2020 p. 581 et seq.).

⁴ Complete Case includes flat-rate pricing, patient-inspired solutions like SureSmile® VPro™ High-Frequency Vibration Device, SureSmile™ Whitening Kit (US) and unlimited refinements throughout treatment time up to three years after aligner production.

SureSmile® Retainers

SureSmile Retainers are designed to help prevent teeth relapse³ by providing adequate mechanical and functional forces for the retention of final occlusion. SureSmile Retainers have the strength to protect teeth from damage caused by bruxing or grinding without compromising the retainer's clinical effectiveness.⁵

Retainers can be ordered for existing patients from the final stage of the treatment plan or from a new scan⁶. Retainers may also be ordered for patients that have not been treated with SureSmile.

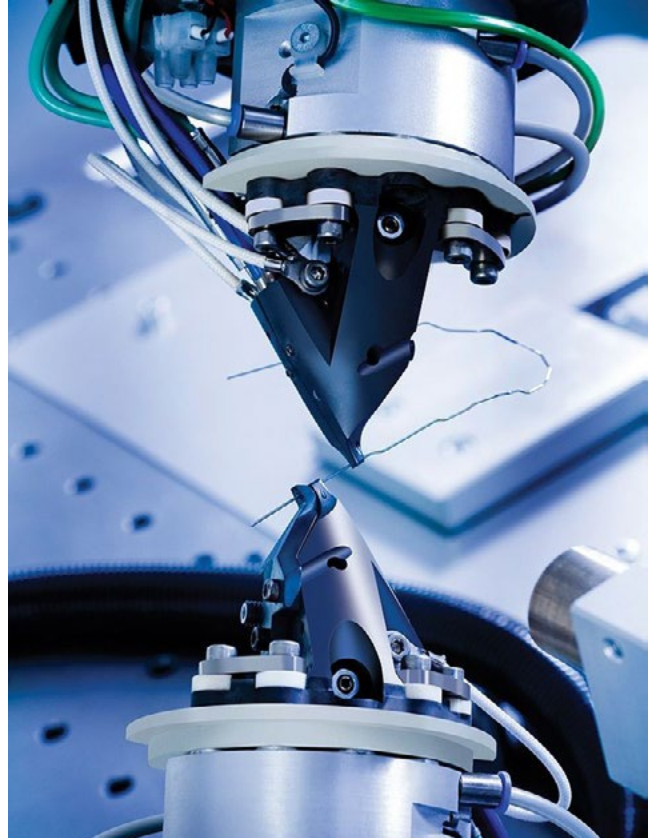
- Straight trimline
- Ordered by arch
- Order includes protective case
- Designed to wear up to 12 months.⁷



SureSmile® Robotically Bent Wires

SureSmile archwires are customized for each unique treatment plan by a 3D plan of target tooth positions and then applying robotic technology to wires made from Shape Memory Alloy. Wires are produced more accurately than is humanly possible and all of the bends are included in one set of wires.

- Each archwire is individually inspected to ensure accuracy
- Archwires are electronically tracked, packaged and shipped



⁵ While under orthodontic treatment and used as prescribed.

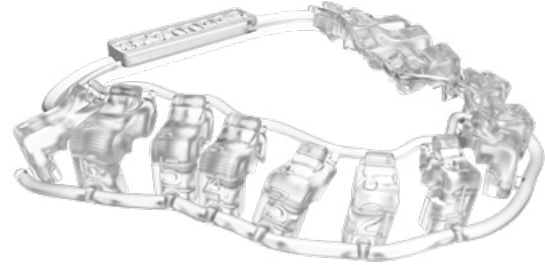
⁶ For Complete cases, there will be no modeling fee charged to order from a new scan.

⁷ When cared for as directed.

SureSmile® IDB

SureSmile IDB provides 3D automation for rapid digital evaluation and adjustment of bracket placement. You'll achieve placement with the accuracy of a jig, but with the chairside efficiency of a tray. Precision occlusal fit and a compact design deliver confident placement while improving patient comfort.

- Rapid & comfortable bracket placement
- Completely adjustable bracket & tooth position
- Simulations of projected tooth movement
- Control over tray segmentation design
- Direct access to brackets during bonding for ease of flash removal



SureSmile® In-Office Clear Aligner Design

SureSmile offers you full flexibility in the aligner treatment. Using the same SureSmile Ortho platform, you can order full-service aligner treatment to your specifications from the SureSmile Digital Lab or digitally design your own treatment plan. Once the treatment plan and staging have been created – by you or the SureSmile Digital Lab – it is time to start production. Depending on the equipment of your practice laboratory, you can fabricate your own in-office aligners. Either order physical models from the SureSmile Digital Lab or even print those from STL files provided in the SureSmile software.

Printed Models

Order 3D physical models through SureSmile for use as diagnostic, final, or study models. These models are also ideal for creating retainers or aligner trays in-office or at a local lab.

- **Convenience/Efficiency:** Streamline the process by avoiding the need to export and import models between SureSmile and lab software.
- **Cost-Effective:** Save labor costs as the service includes file preparation, with models merged and ready for printing.
- **Easy Identification:** Each model is printed with the patient ID and a serial number for easy identification and storage



Choose Dentsply Sirona for Digital Dentistry Solutions

Dentsply Sirona can accompany you step by step on your individual journey into digital orthodontics. Discover the technology that opens digital workflows for the ideal smile, from digital x-rays, intraoral scanning, and treatment. The question today is no longer whether your practice works digitally, but to what extent?

Efficient Digital Workflows

No matter how you would like to design your workflows, our dental intraoral scanners powered by DS Core provide a perfect starting point into digital dentistry for your practice - in collaboration with your preferred partners. They make impression-taking easier, more intuitive, and ergonomic than ever before. The precise 3D models in natural colors will impress you and your patients.

Digital Impressions Benefit Patients and Your Practice

When you think of digital impressions – fast processing and patient satisfaction typically come to mind. If you can eliminate the discomfort of a conventional impression, you can improve patient comfort with shorter visits and faster results. Streamlined processing means faster turnaround times, so ending the treatment can commence at an earlier date. The positive impact on planning and impression taking does not end there. An excellent scan is just the beginning.

- Take and label digital models quickly and simply for archiving purposes
- Predictably reproducible results
- Eliminate the time-consuming need to create and send physical impressions



Primescan®

Engineered for Superior Performance

Primescan enables all kinds of treatment, from single tooth to full arch. With its high accuracy, there are no open questions. It allows for crowns, bridges, the whole area of splints, implant restorations, and surgical guides.



Primescan Connect™

The flexible laptop solution

Enjoy all the benefits Primescan has to offer at a more accessible price with Primescan Connect. The flexible laptop solution for an easy starting point into digital dentistry.



Digital X-ray Solutions

Extraoral X-rays can be crucial for arriving at an accurate diagnosis, especially in complicated and evasive cases. Dentsply Sirona X-ray Solutions support patient needs from capturing the temporomandibular joints to visualizing the smallest details using up to 80 µm high-resolution endodontic X-ray. Additionally, low dose X-ray provides patient safety opening the doors to more routine applications.



Axeos®

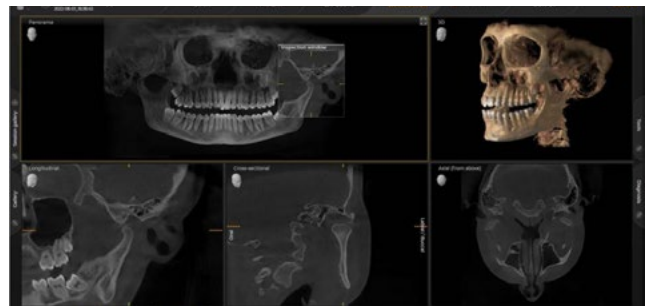
The 2D/3D specialist system with a large volume and high image quality for practices with a broad treatment offering. Developed together with dentists and clinicians, Axeos provides the fullest range of functions out of all Dentsply Sirona extraoral X-ray devices. In addition to excellent image quality and tailor-made 3D volume sizes, the dental imaging device is fully optimized for enhanced patient comfort. Axeos not only provides quality in performance and comfort, but also with its award-winning design thanks to the integrated bite block accessory cabinet and ambient light.

Features and technical data

- Intelligent Low Dose
- Patient positioning: automatic (occlusal bite block)
- Smart height adjustment
- Ambient light: Illuminated back and cabinet
- Image volume (dxh): 5cm x 5.5cm to 17cm x 13cm
- MARS: Metal Artifacts Reduction Software
- HD mode
- Panoramic exposure time: P1: max. 14.2 s and P1 Quickshot: max. 9.1 s
- Panorama technology: DCS
- Ceph exposure time: Standard 9.4 s and Quickshot 4.7 s
- User interface: New EasyPad

Cephalometric Arm

- Optional at the time of purchase or it can be retroactively added at a later time.
- The arm can be mounted on the right or left side of the unit based on your preference and space requirements.
- Using a dedicated sensor, you get lateral and symmetrical p.a. or a.p. as well as carpus images





SureSmile®
VPro™

 Dentsply
Sirona

SureSmile® VPro™ Vibration Device

SureSmile VPro uses a trusted technology called high frequency vibration (HFV) to stimulate orthodontic tooth movement. When used with your orthodontic treatment for 5 minutes a day, your SureSmile VPro device may:

- Facilitates minor tooth movement¹⁻⁴
- Reduce discomfort^{1,5}
- Reduce office visits¹
- Improve aligner seating^{1,6†}

V18101	SureSmile VPro Kit
---------------	--------------------

SureSmile® VPro™ Vibration Device (Japan only)

SureSmile VPro high frequency vibration (HFV) that can improve the orthodontic treatment experience. SureSmile VPro device may:

- Reduce discomfort^{1,5}
- Improve aligner seating^{1,6†}
- Improve aligner tracking

V18103	SureSmile VPro Kit (Japan only)
---------------	---------------------------------



Kit contains: Vibration Device, Mouthpiece, and USB-C Data Cable

SureSmile® VPro™ Mouthpiece

V18102	SureSmile VPro Mouthpiece
V18104	SureSmile VPro Mouthpiece (Japan only)



SureSmile® VPro™ Accessories

V18113	USB-C Data Cable
V18114	US Single USB Charging Block



The VPro™ Series devices are intended for use by the orthodontic patient during treatment with aligners to facilitate minor anterior tooth movement. Rx only. See Instructions for Use for full Prescribing Information.

†Over not using the device.

References: 1. Alansari S, Atique MI, Gomez JP, et al. The effects of brief daily vibration on clear aligner orthodontic treatment, J World Fed Ortho. 2018. <https://doi.org/10.1016/j.ejwf.2018.10.002>. 2. Shipley T. Effects of high frequency acceleration device on aligner treatment-A Pilot Study. Dent J. 2018;6(3):32. 3. Alikhani M, Alansari S, Hamidaddin MA, Sangsuwon C, Alyami B, et al. Vibration paradox in orthodontics: anabolic and catabolic effects. PLoS ONE. 2018;13(5):e019165. 4. Judex S, Pongkitwitton S. Differential efficacy of 2 vibrating orthodontic devices to alter the cellular response in osteoblasts, fibroblasts, and osteoclasts. Dose Response. 2018;16(3):1559325818792112. Published 2018 Aug 16. doi:10.1177/1559325818792112. 5. Data on file. 6. Shipley T. VPro5®—more efficient aligner seating with high-frequency vibration. Orthodontic Practice US. 2016. Vol 17, Num 5.



Patient
Care



Retainer Brite® Dental Appliance Cleaner

- Uniquely formulated to help preserve clarity and cleanliness
- Kills 99% of Common Odor-Causing Bacteria*
- It's easy to supply your patients
- Stock 36-tablet or 96-tablet boxes to sell or give to patients
- Include a Patient Pack with a new appliance!

RB-36-CASE	(24) 36 tablets per Box
RB-92-CASE	(12) 96 tablets per Box
RB-TP	(100) Patient Packs. Each Pack has 2 tablets

*Kills 99% of common odor-causing bacteria including: P. aeruginosa, S. aureus, E.coli, F. nucleatum (ASTM E2315-03), P. aeruginosa, S. aureus, E.hirae, E. facium (EN 13727 and EN 14561). Independent test lab data on file.



Sonic Cleaners²

- Use the Cordless Sonic Cleaner with Retainer Brite Dental Appliance Cleaner to clean & brighten removable dental appliances.
- Includes a six month replacement warranty
- 3.5" x 4", White
- Uses 2 AA batteries (included)
- Personalizable - promote your business by adding your logo!

RB-USC	Non-Personalized Sonic Cleaner
RB-USC-C	Personalized Sonic Cleaner

²Product is not CE marked



Therapy Wafers

- May help reduce discomfort associated with orthodontic treatment
- Chewing on wafer may increase blood circulation around recently moved teeth by stimulating and massaging gum tissue
- Pack of 25

EB25	Cherry Scented, Clear
EB-25G	Grape Scented, Purple
EB-25PBG	Bubble Gum Scented, Pink
EB-25M	Mint Scented, Green



Chewies® Aligner Tray Seaters

- Same size as standard dental cotton roll (1 3/8" length x 7/16" width)
- Made of soft plastic
- Patient Pack contains 2 seaters
- Bag of 10 patient packs

AC-PG	Purple Grape
AC-YPIN	Yellow Pineapple
AC-W	White Unscented
AC-GM	Green Mint
AC-PBG	Pink Bubblegum



Retainer Retrievers

- Remove appliances cleanly and efficiently
- Stores in appliance case
- 10 individual tamper-proof patient bags per packs

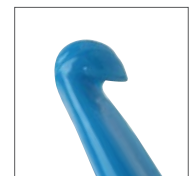
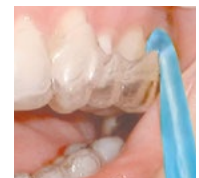
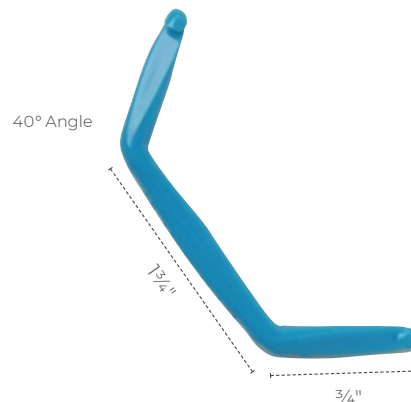
RR-ITSB	Tropical Sparkle Blue
RR-ITSG	Tropical Sparkle Green
RR-ITSO	Tropical Sparkle Orange
RR-ITSP	Tropical Sparkle Pink
RR-IW	White



Appliance Remover Tool

- Ideal for patients with large fingers
- Convenient; fits inside appliance cases
- 40° Angle, 1 3/4 in, 3/4 in
- Pack of 25

ART01	Appliance Remover Tool
--------------	------------------------





Attachment Bonding



ATTACHMENT BONDING

Apply Etch

Caulk® 34% Tooth Conditioner Phosphoric Etching Gel

- Surface-conditioning agent for treatment of enamel and/or dentin prior to adhesive restoration placement

North America (US & Canada)

646125 3 mL gel syringe (2); Applicator Tips (25)

646126 Applicator Tips (Needles), Blue (25)

64600 6 mL Refill Bottle (2)

APAC only

646125Y 3mL gel syringe (2); Applicator Tips (25)



DeTrey® Conditioner 36 Phosphoric Acid Gel

- For the etching of enamel and conditioning of dentin prior to bonding with resin-based materials

Europe

60615208 3 mL syringe (2), Applicator Tips (25)

60615209 3 mL syringe (10), Applicator Tips (50)



Apply Adhesive

Prime&Bond active® Universal Adhesive

- Versatility for use with all etching methods, all indications
- Reliable performance on over-wet and over-dried dentin

North America (US & Canada) & Europe

60667347 Prime&Bond active Introductory Kit:
4 mL Bottle (1); CliXdish™ (1);
Applicator Tips (50)

60667342 4 mL Bottle Prime&Bond active (3)

60667341 4 mL Bottle Prime&Bond active (1)

60667340 2 mL Bottle Prime&Bond active (1)

60667343 Single Unit Doses (80); Applicator Tips (50)

60667345 Single Unit Doses (240); Applicator Tips (100)

60667346 CliXdish™ mixing well (EU) (3)

693006 CliXdish™ mixing well (NA) (3)

658012 50 x Applicator Tips



Apply Adhesive

Prime&Bond universal® Universal Adhesive

EOC (Eastern Group/APAC/LATAM)

60667350	4 mL bottle refill
60667351	2.5 mL bottle refill
60667346	3 x CliXdish™ refill
658012	50 x Applicator Tips



Light Cure

SmartLite® Pro Modular LED Curing Light

- Compact cordless design with convenient handling features and exchangeable battery pack.
- LED tip design providing excellent intra-oral access.
- Polymerization area (optic effective cross-sectional area) of 10 mm in diameter.
- Up to 10 seconds curing time per activation with audible signal at start and end of cycle.

Global

644400	SmartLite® Pro Introductory Kit: Handpiece, Cure Tip, Transillumination Tip, Batteries, Charging Base, & Accessories
644401	SmartLite® Pro Battery
644402	SmartLite® Pro Barrier Sleeves (100)
644403	SmartLite® Pro Eye Protection Shields (5)
644406	SmartLite® Pro PolyCure Tip Refill
644407	SmartLite® Pro Cure Tip Refill



Fill Attachment Template

Compules® Tips Gun Applicator Gun

- Applicator gun for all Dentsply Sirona filling materials delivered in Compules Tips.

Global

60665900	Compule Tips Gun (EU)
635105	Compule Tips Gun (NA)



Fill Attachment Template

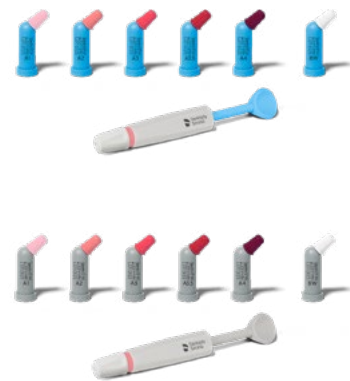
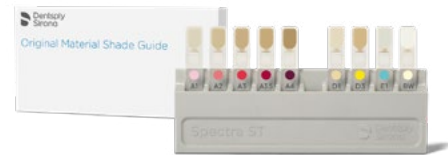
Spectra® ST Universal Composite Restorative

Depending on market location, Spectra ST composites are available as either TPH Spectra® ST, Ceram.x Spectra® ST, or Neo Spectra® ST

- Optimized handling for great adaptation that doesn't stick to hand instruments to help avoid air pockets.
- Available in your choice of High Viscosity (HV) firm/packable or Low Viscosity (LV) creamy/smooth
- Simplified shade system of 5 universal CLOUD™ shades to cover full VITA®^{®1} shade range
- Excellent chameleon effect blends into surrounding tooth structure
- Easy to see under ultraviolet light

Global

642013 TPH Spectra ST Shade Guide



North America (US & Canada)

TPH Spectra ST - HV Compules

642004 TPH Spectra ST - HV Compules Tips Intro Kit:
0.25 g TPH Spectra ST - HV Compules Tips (40);
Shades A1, A3.5, A4, BW (5 each); Shades A2, A3
(10 each); Compules Tips Gun; i-Shade Label

TPH Spectra ST - HV Compules Tips Refill 0.25 g (20)

642231	Shade A1 (Vita® Shades A1, B1, C1)
642232	Shade A2 (Vita® Shades A2, B2, D2)
642233	Shade A3 (Vita® Shades A3, C2, D3, D4)
642234	Shade A3.5 (Vita® Shades A3.5, B3, B4, C3)
642235	Shade A4 (Vita® Shades A4, C4)
642236	Shade BW (Bleach White)

TPH Spectra ST - HV Syringe Refill 3.0 g

642470	Shade A1 (Vita® Shades A1, B1, C1)
642471	Shade A2 (Vita® Shades A2, B2, D2)
642472	Shade A3 (Vita® Shades A3, C2, D3, D4)
642473	Shade A3.5 (Vita® Shades A3.5, B3, B4, C3)
642474	Shade A4 (Vita® Shades A4, C4)

North America (US & Canada)

TPH Spectra ST - LV Compules

642000 TPH Spectra ST - LV Compules Tips Intro Kit:
0.25 g TPH Spectra ST - HV Compules Tips (40);
Shades A1, A3.5, A4, BW (5 each); Shades A2, A3
(10 each); Compules Tips Gun; i-Shade Label

TPH Spectra ST - LV Compules Tips Refill 0.25 g (20)

642220	Shade A1 (Vita® Shades A1, B1, C1)
642221	Shade A2 (Vita® Shades A2, B2, D2)
642222	Shade A3 (Vita® Shades A3, C2, D3, D4)
642223	Shade A3.5 (Vita® Shades A3.5, B3, B4, C3)
642224	Shade A4 (Vita® Shades A4, C4)
642225	Shade BW (Bleach White)

TPH Spectra ST - LV Syringe Refill 3.0 g

642460	Shade A1 (Vita® Shades A1, B1, C1)
642461	Shade A2 (Vita® Shades A2, B2, D2)
642462	Shade A3 (Vita® Shades A3, C2, D3, D4)
642463	Shade A3.5 (Vita® Shades A3.5, B3, B4, C3)
642464	Shade A4 (Vita® Shades A4, C4)

Fill Attachment Template

Europe & Australia/NZ

Ceram.x Spectra ST - HV Compules

60701570N Ceram.x Spectra ST - HV Compules Tips Intro Kit: 0.25 g Ceram.x Spectra ST - HV Compules Tips (24); Shades A1, A2, A3.5, A4 (8 each); Shade A3 (8); Compules Tips Gun; i-Shade Label

Ceram.x Spectra ST - HV Compules Tips Refill 0.25 g (16)

60701571N Shade A1

60701572N Shade A2

60701573N Shade A3

60701575N Shade A3.5

60701574N Shade A4

60701576N Shade BW (Bleach White)

Ceram.x Spectra ST - HV Compules Tips Eco Refill 0.25 (52)

60701582N Shade A2

60701583N Shade A3

Europe & Australia/NZ

Ceram.x Spectra ST - LV Compules

60701690 Ceram.x Spectra ST - LV Compules Tips Intro Kit: 0.25 g Ceram.x Spectra ST - LV Compules Tips (24); Shades A1, A2, A3.5, A4 (8 each); Shade A3 (8); Compules Tips Gun; i-Shade Label

Ceram.x Spectra ST - LV Compules Tips Refill 0.25 g (16)

60701691 Shade A1

60701692 Shade A2

60701693 Shade A3

60701695 Shade A3.5

60701694 Shade A4

60701696 Shade BW (Bleach White)

Ceram.x Spectra ST - LV Compules Tips Eco Refill 0.25 (52)

60701672 Shade A2

60701673 Shade A3

Europe & Australia/NZ

Ceram.x Spectra ST - HV Syringe Intro Kit

60701550N Ceram.x Spectra ST - HV Syringe Intro Kit: 3.0 g Ceram.x Spectra ST - HV Syringes (5: 1 each of Shades A1, A2, A3, A3.5, A4); i-Shade Label; 2.5 mL Bottle Prime&Bond active; CliXdish; Applicator Tips (50)

Ceram.x Spectra ST - HV Syringe Refill 3.0 g

60701551N Shade A1

60701552N Shade A2

607015513N Shade A3

60701555N Shade A3.5

60701554N Shade A4

Europe & Australia/NZ

Ceram.x Spectra ST - LV Syringe Intro Kit

60701680 Ceram.x Spectra ST - LV Syringe Intro Kit: 3.0 g Ceram.x Spectra ST - LV Syringes (5: 1 each of Shades A1, A2, A3, A3.5, A4); i-Shade Label; 2.5 mL Bottle Prime&Bond active; CliXdish; Applicator Tips (50)

Ceram.x Spectra ST - LV Syringe Refill 3.0 g

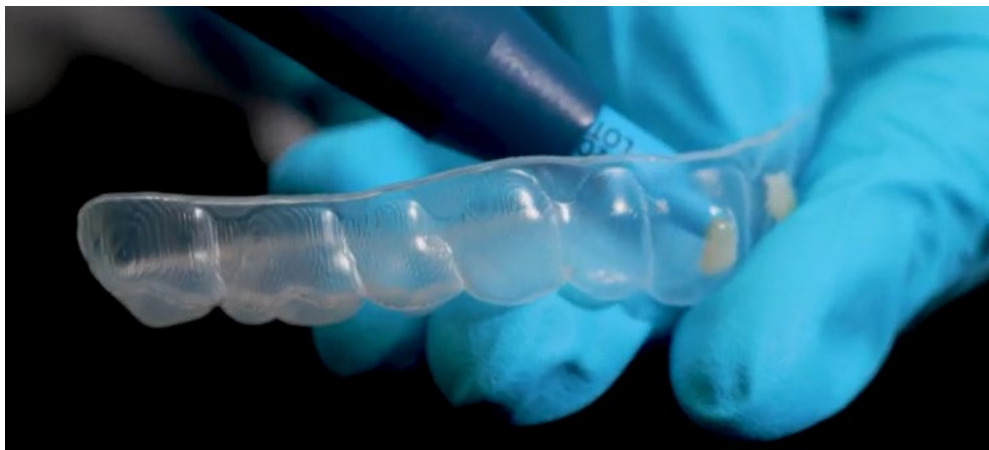
60701681 Shade A1

60701682 Shade A2

60701683 Shade A3

60701685 Shade A3.5

60701684 Shade A4



Fill Attachment Template

APAC-Eastern Group-CEE

Neo Spectra ST - HV Compules

60701970 Neo Spectra ST - HV Compules Tips Intro Kit: 0.25 g Neo Spectra ST - HV Compules Tips (24); Shades A1, A2, A3.5, A4 (4 each); Shade A3 (8); Compules Tips Gun; i-Shade Label; 2.5 ml Bottle Prime&Bond Universal Adhesive; CliXdish; Applicator Tips (50)

Neo Spectra ST - HV Compules Tips Refill 0.25 g (16)

60701971 Shade A1 (Vita® Shades A1, B1, C1)

60701972 Shade A2 (Vita® Shades A2, B2, D2)

60701973 Shade A3 (Vita® Shades A3, C2, D3, D4)

60701975 Shade A3.5 (Vita® Shades A3.5, B3, B4, C3)

60701974 Shade A4 (Vita® Shades A4, C4)

60701976 Shade BW (Bleach White)

APAC-Eastern Group-CEE

Neo Spectra ST - LV Compules

60701870 Neo Spectra ST - LV Compules Tips Intro Kit: 0.25 g Neo Spectra ST - LV Compules Tips (24); Shades A1, A2, A3.5, A4 (4 each); Shade A3 (8); Compules Tips Gun; i-Shade Label; 2.5 ml Bottle Prime&Bond Universal Adhesive; CliXdish; Applicator Tips (50)

Neo Spectra ST - LV Compules Tips Refill 0.25 g (16)

60701871 Shade A1 (Vita® Shades A1, B1, C1)

60701872 Shade A2 (Vita® Shades A2, B2, D2)

60701873 Shade A3 (Vita® Shades A3, C2, D3, D4)

60701875 Shade A3.5 (Vita® Shades A3.5, B3, B4, C3)

60701874 Shade A4 (Vita® Shades A4, C4)

60701876 Shade BW (Bleach White)

APAC-Eastern Group-CEE

Neo Spectra ST - HV Syringe Intro Kit

60701980 Neo Spectra ST - HV Syringe Intro Kit: 3.0 g Neo Spectra ST - HV Syringes (5: 1 each Shades A1, A2, A3, A3.5, A4); i-Shade Label; 2.5 mL Bottle Prime&Bond Universal; CliXdish; Applicator Tips (50)

Neo Spectra ST - HV Syringe Refill 3.0 g

60701981 Shade A1

60701982 Shade A2

60701983 Shade A3

60701985 Shade A3.5

60701984 Shade A4

60701990 Neo Spectra ST - HV Syringe Eco Kit: 3.0 g Neo Spectra ST - HV Syringes (6: 3 each Shades A2 & A3); i-Shade Label; 2.5 mL Bottle Prime&Bond Universal; CliXdish; Applicator Tips (50)

APAC-Eastern Group-CEE

Neo Spectra ST - LV Syringe Intro Kit

60701980 Neo Spectra ST - HV Syringe Intro Kit: 3.0 g Neo Spectra ST - HV Syringes (5: 1 each Shades A1, A2, A3, A3.5, A4); i-Shade Label; 2.5 mL Bottle Prime&Bond Universal; CliXdish; Applicator Tips (50)

Neo Spectra ST - LV Syringe Refill 3.0 g

60701881 Shade A1

60701882 Shade A2

60701883 Shade A3

60701885 Shade A3.5

60701884 Shade A4

60701890 Neo Spectra ST - HV Syringe Eco Kit: 3.0 g Neo Spectra ST - HV Syringes (6: 3 each Shades A2 & A3); i-Shade Label; 2.5 mL Bottle Prime&Bond Universal; CliXdish; Applicator Tips (50)



Remove Flash

Enhance® Finishing System

- Finishing and Polishing System
- Remove flash and smooth surface
- Pre-mounted, single use, aluminum oxide impregnated, cured urethane dimethacrylate resin finishers

North America & Europe

662020	Enhance + Enhance PoGo Complete Kit: 30 Enhance Finishing Tips (10 Cups, 10 Points, 20 Discs); 30 Enhance PoGoPolishing Tips (10 Cups, 10 Points, 10 Discs)
624075	Enhance System Kit: Enhance Finishing Discs (20); Points (10); Cups (10); Prisma Gloss Polishing Cups (25); 1 Metal Mandrel; Prisma Gloss Composite Polishing Paste (4.0 g); Prisma Gloss Composite Polishing Paste Extra Fine (4.0 g)
624045	Enhance Finishing Tips, Discs (40)
624055	Enhance Finishing Tips, Cups (40)
624065	Enhance Finishing Tips, Points (40)

EOC

624045X	Enhance Finishing Tips, Discs (40)
624055X	Enhance Finishing Tips, Cups (40)
624065X	Enhance Finishing Tips, Points (40)



Remove Attachment

Midwest® Trimming and Finishing Carbide Burs

- Use to remove attachment

North America (US & Canada)

389509	7803-Bullet Shape
386510	7901-Needle Shape





Interproximal Reduction

SpaceFile® Interproximal Reduction Kit

- Precision Swiss-made, electro-chemical bonded diamond files accomplish a wide range of tasks including breaking contact, reduction, contouring, fine trimming, and finishing
- Double-sided or single-sided (left or right)
- Can be used manually two ways: hand-held and with removable grip
- Files, grip and inner tray are autoclavable



Assorted Packs

Includes 8 Files (1 of each thickness), 1 Serrated Contact Point Saw, and 1 Removable Grip

DOUBLE-SIDED	SINGLE-SIDED LEFT	SINGLE-SIDED RIGHT
40034	40034-LS	40034-RS

Single Packs

Includes 8 files (all same thickness) and 1 Removable Grip

	APPROXIMATE THICKNESS		
Polishing A final step in tooth surface restoration.	40035-G	40035-LS-G	40035-RS-G
	0.13 mm	0.11 mm	0.11 mm
Finishing For finishing prior to final polish.	40035-P	40035-LS-P	40035-RS-P
	0.16 mm	0.13 mm	0.13 mm
XX Fine Pre-polish and finish reduced areas. Also use as initial strip for excessive crowding.	40035-W	40035-LS-W	40035-RS-W
	0.18 mm	0.16 mm	0.16 mm
X Fine Pre-polish stripped areas. Also use as initial strip for crowded cases.	40035-Y	40035-LS-Y	40035-RS-Y
	0.21 mm	0.19 mm	0.19 mm
Fine Use to initiate reduction in crowded cases. Also use to contour after reduction.	40035-R	40035-LS-R	40035-RS-R
	0.29 mm	0.22 mm	0.22 mm
Medium Use for reduction with some crowding or when some space exists. Smaller grain can achieve results before using Coarse strip.	40035-BL	40035-LS-BL	40035-RS-BL
	0.37 mm	0.27 mm	0.27 mm
Coarse Primary working strip for IPR. Also use to trim and contour.	40035-GR	40035-LS-GR	40035-RS-GR
	0.46 mm	0.33 mm	0.33 mm
X Coarse Use for maximum reduction at start of IPR.	40035-BLK	40035-LS-BLK	40035-RS-BLK
	0.54 mm	0.41 mm	0.41 mm
Serrated Contact Point Saw Use to break contact points on enamel, composite, amalgam, porcelain or gold.	40035-CS 0.34 mm		

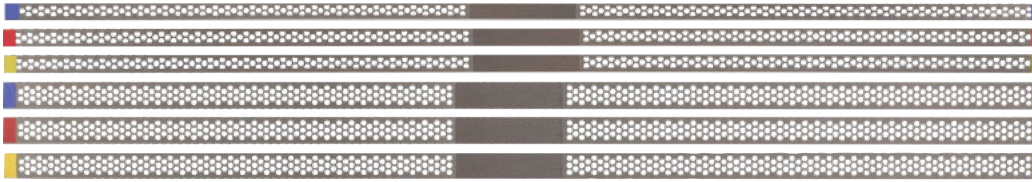
SpaceFile® Removable Grip

40035-GRIP 3-Pack



Flexview® Interproximal Strips

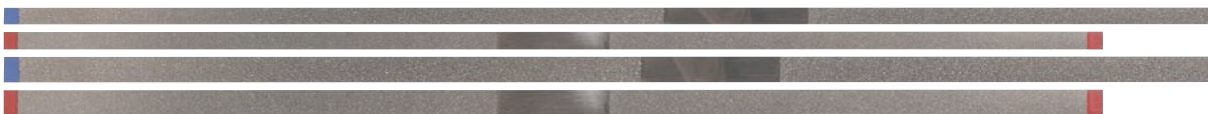
- Optimal visibility
- Gateway area allows easy access for IPR stripping and finishing



Item#	NARROW - 2.5 MM WIDE / 148 MM LONG				WIDE - 3.75 MM WIDE / 148 MM LONG			
	Single Packs 10 Strips (all same Grit)			Assorted Packs 15 Strips	Single Packs 10 Strips (all same Grit)			Assorted Packs 15 Strips
	5VNM1	5VNF1	5VNX1	5VN15	5VWM1	5VWF1	5VWX1	5VW15
Grit	Medium 45 micron	Fine 30 micron	Extra-Fine 15 micron	(5 of each Grit)	Medium 45 micronn	Fine 30 micron	Extra-Fine 15 micron	(5 of each Grit)
Sided	Single	Single	Single		Single	Single	Single	
Thickness	0.13 mm	0.10 mm	0.08 mm		0.13 mm	0.10 mm	0.08 mm	

Diamond Interproximal Strips

- Gateway area allows easy access to contact points
- Stainless steel with electro-chemical bonded diamonds



Item#	NARROW - 2.5 MM WIDE / 148 MM LONG			WIDE - 3.75 MM WIDE / 148 MM LONG		
	Single Packs 10 Strips (all same Grit)			Single Packs 10 Strips (all same Grit)		
	53002	53001	53003	53101	53102	53103
Grit	Medium 45 micron	Medium 45 micron	Fine 30 micron	Medium 45 micron	Medium 45 micron	Fine 30 micron
Sided	Double	Single	Single	Single	Double	Single
Thickness	0.18 mm	0.13 mm	0.10 mm	0.13 mm	0.18 mm	0.10 mm

Qwikstrip™ Interproximal Strips¹

- Help Prevent Soft Tissue Irritation
- IPR strips allow IPR to be performed in the anterior and posterior of the mouth
- Serrated strip is used to break contact points prior to performing IPR
- Grip handles allow control, so there is less chance of cutting patients' lips or gums
- Autoclavable

¹ Product is not CE marked.

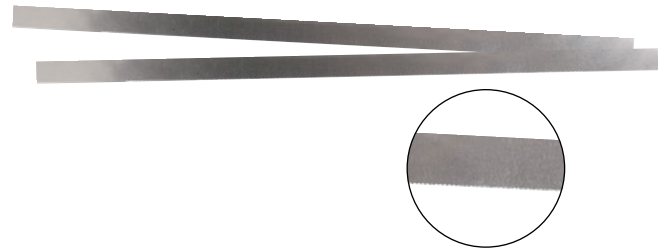
Grit	Single Packs 10 Strips (all same Grit)					Assorted Packs 10 Strips (2 of each Single Pack Grit)	Serrated Packs 10 Strips SERRATED
	EXTRA COARSE 180 micron	COARSE 120-135 micron	MEDIUM 100-120 micron	FINE 45 micron	SUPERFINE 35 micron		
Single-Sided	QS-XCB	QS-CG	QS-MB	QS-FR	QS-SFY	QS-ASRT	QS-SW
Double-Sided	QSDS-XCB	QSDS-CG	QSDS-MB	QSDS-FR	QSDS-SFY	QSDS-ASRT	-
Curved Single-Sided	QSC-XCB	QSC-CG	QSC-MB	QSC-FR	QSC-SFY	QSC-ASRT	-



QwikStrip is not a trademark of Dentsply Sirona.

Serrated Interproximal Strips

- Use to open bonded proximal contact points
- Ultra-thin; made of stainless steel
- Thickness 0.05 mm, width 6 mm, length 150 mm



53400 Serrated Interproximal Strips - 10 pack

IPR Gauge Set

- Use to measure and confirm space
- Set of six stainless steel gauges
- 0.1 mm, 0.2 mm, 0.25 mm, 0.3 mm, 0.4 mm, and 0.5 mm
- Autoclavable

IPR01 IPR Gauge Set





Essix®
Plastics



Appearance. Strength. Durability.

There are plenty of reasons to insist on authentic Essix® Plastics. But is there a better reason than because the material you use is an integral part of your treatment plan?

Dentsply Sirona is a highly-respected name in dental plastics and polymer technology. When it comes to meeting the needs of clinician and patient alike, Essix® Plastics give you the quality you demand and the versatility you need.

Choosing the Right Plastic

	Aligners – Standard	Aligners – Bruxers	Retainers – Standard	Retainers – Bruxers	Whitening Trays	Nightguards	Mouthguards – Contact Sports	Bruxism Appliances	Temporary Bridges	Splints	Accepts Acrylics/ Bonding Agents	Bite Planes	Snoring appliances
Essix® PLUS™ Plastic	X		X						X		X		
Essix® ACE® Plastic	X		X						X				
Essix® C+® Plastic		X		X								X	
Essix® Nightguard Laminate ⁵						X		X		X			
Essix® Dual Laminate ⁵						X				X	X		
Essix® A+® Plastic										X	X	X	X
Essix® TRAY-RITE® Plastic ⁴					X								
Essix® Laminated Sports Mouthguard Material ⁴							X						

Chart indicates intended use.¹

Essix® plastics are not made with natural rubber latex or BPA.

Footnotes referenced in Plastic section of catalog

¹ Intended uses as cleared through 510(k) K062828 and verified through Design Controls.

² Sheridan, John J., DDS, MSD. Essix Appliance Technology: Applications, Fabrication and Rationale. 2003. GAC International Inc. Note: Essix Ace, Plus and A+ share chemical characterization profiles.

³ Yanamoto, Souichi et al. Semi-fixed versus fixed oral appliance therapy for obstructive sleep apnea: A randomized crossover pilot study. Journal of Dental Sciences. Aug 2020; 16: p. 404-409.

⁴ Product is not a medical device in most markets.

⁵ Medical device material is not CE marked

PLASTICS



Essix® ACE® Advantages



COST EFFECTIVE

Less expensive per sheet than a multi-laminate plastic.



BIO-COMPATIBLE

Safe for the patient and clinician for its intended use.



TREATS A WIDE RANGE OF MALOCCLUSIONS

ESSIX® PLUS™ Plastic

Primary Use: Retainers² and Aligners²

- Accepts acrylics/bonding agents
- Clear material has protective film on both sides
- May be used for fabricating temporary bridges²

THICKNESS	SHAPE	ITEM #	QTY
.035" 7/8 mm	5" Square	1APL35S5	Box of 80
	125 mm Square	1APL35S125	
	125 mm Circle	1APL35C125	
	120 mm Circle	1APL35C120	
.040" 1 mm	5" Square	1APL40S5	Box of 80
	125 mm Square	1APL40S125	
	125 mm Circle	1APL40C125	
	120 mm Circle	1APL40C120	

ESSIX® ACE®

Primary Use: Retainers² and Aligners²

- Clear material has protective film on both sides
- May be used for fabricating temporary anterior bridges²

THICKNESS	SHAPE	ITEM #	QTY
.030" 3/4 mm	5" Square	1A350	Box of 100
	125 mm Square	1A347	
	125 mm Circle	1A325	
	120 mm Circle	1A320	
.035" 7/8 mm	5" Square	1AH50	Box of 100
	125 mm Square	1AH347	
	125 mm Circle	1AH25	
	120 mm Circle	1AH20	
.040" 1 mm	5" Square	1A450	Box of 100
	125 mm Square	1A478	
	125 mm Circle	1A425	
	120 mm Circle	1A420	

ESSIX® C+® Plastic

Primary Use: Retainers² and Aligners² for Bruxers

- Not for use with acrylics/bonding agents
- May be used for fabricating bite planes²

THICKNESS	SHAPE	ITEM #	QTY
.040" 1mm	5" Square	1C500	Box of 100
	125 mm Square	1C478	
	125 mm Circle	1C125	
	120 mm Circle	1C120	



ESSIX® TRAY-Rite® Plastic⁴

Primary Use: Whitening Trays

- Clings to the tooth surface
- Doesn't stretch like EVA material – helps prevent bleaching material from leaking into mouth
- No reservoirs needed when fabricated on a vacuum machine

THICKNESS	SHAPE	ITEM #	QTY
.020" 1/2mm	5" Square	70500	Box of 50
	125 mm Circle	70125	
	120 mm Circle	70120	



PLASTICS



ESSIX® Dual Laminate⁵

Primary Use: TMJ Splints

- Dual-sided construction: hard top surface withstands mastication pressure while soft bottom surface provides patient comfort
- Accepts bonding agents
- May be used for fabricating nightguards for clenchers and grinders
- *Note: Not recommended for use in a Drufomat*

THICKNESS	SHAPE	ITEM #	QTY
.080" 2 mm	5" Square	12500	Box of 12
	125 mm Circle	12125	
.120" 3 mm	5" Square	1MEDL	Box of 12
	125 mm Circle	1MEDL125	



ESSIX® A+® Plastic

Primary Use: Bite Planes

- Clear material has protective film on both sides
- Accepts acrylics/bonding agents
- May be used for fabricating splints² and snoring appliances⁵
- Not suitable for bruxers/grinders

THICKNESS	SHAPE	ITEM #	QTY
.020" 1/2 mm	5" Square	10025	Box of 100
	125 mm Square	10020	
	120 mm Circle	11021	
.030" 3/4 mm	5" Square	10035	Box of 100
	125 mm Square	10030	
	125 mm Circle	11030	
.040" 1 mm	120 mm Circle	11031	Box of 100
	5" Square	10045	
	125 mm Square	10040	
.060" 1 1/2 mm	125 mm Circle	11040	Box of 50
	120 mm Circle	11041	
	5" Square	10065	
.080" 2 mm	125 mm Square	10060	Box of 50
	125 mm Circle	11060	
	120 mm Circle	11061	
.120" 3 mm	5" Square	10085	Box of 50
	125 mm Square	10080	
	125 mm Circle	11080	
.120" 3 mm	120 mm Circle	11081	Box of 25
	5" Square	13500	
	120 mm Circle	13120	

ESSIX® Nightguard Laminate⁵

Primary Use: Bruxism Appliances

- Single-sided construction; soft surface
- Excellent shape memory and abrasion resistance
- May be used for fabricating orthodontic repositioners and periodontal splints

THICKNESS	SHAPE	ITEM #	QTY
.120" 3mm	5" Square	1MENL	Box of 12



ESSIX® Laminated Sports Mouthguard Material⁴

Primary Use: Contact Sports

- Primary Use: Contact Sports
- Two laminated layers of protection
- A 1/8" plastic insert helps protect the incisal edges of teeth
- Pre-laminated
- 5" Square sheets, 12 per box

0.160" (4 mm)		0.200" (5 mm)	
ITEM #	ITEM #	COLOR	
1MLS5	1MLS55	CLEAR	
1MLS5-BK		●	BLACK
1MLS5-BL		●	BLUE
1MLS5-GR		●	GREEN
1MLS5-OR	1MLS55-OR	●	ORANGE
1MLS5-YE		●	YELLOW
1MLD5-BLYE		●	BLUE/YELLOW
1MLD5-PUWH		●	PURPLE/WHITE
1MLT5		●	RED/WHITE/BLUE





(A) Width of 6 anterior teeth on curve



(B) Length
(C) Width



(D) Straight line measurement of 4 upper posterior teeth

(E) Straight line measurement of 4 lower posterior teeth



ESSIX® Pontics⁵

Primary Use: Temporary Bridges

- Wear-resistant, vacuum-processed synthetic resin
- Special lingual channel ensures pontic locks into the plastic appliance
- US Patent #8,070,485



Gray
(G) 59
Vita C1*



White
(W) 62
Vita B1*



Yellow
(Y) 65
Vita A1*

* Vita A, B & C designations correspond to the Vita® shade guide, which is meant to be a guide, not a match. Vita is not a trademark of Dentsply Sirona.

Upper Laterals

Mold Classification	Tapered
Length Lateral (B)	9.9 mm
Width Lateral (C)	6.2 mm

EUT6-G Grey

EUT6-W White

EUT6-Y Yellow

Tapered Upper Anteriors

Mold Classification	Tapered
Total Width on Curve (A)	49.5 mm
Length Lateral (B)	10.8 mm
Width Lateral (C)	8.3 mm

TUA6-G Grey

TUA6-W White

TUA6-Y Yellow

Square Upper Anteriors

Mold Classification	Square
Total Width on Curve (A)	57 mm
Length Central (B)	11 mm
Width Central (C)	9.4 mm

SUA6-G Grey

SUA6-W White

SUA6-Y Yellow

Lower Anteriors

Total Width on Curve (A)	37.5 mm
Length Central (B)	9.7 mm
Width Central (C)	5.1 mm

ELA6-G Grey

ELA6-W White

ELA6-Y Yellow

0° Posteriors - Upper

Width Upper (D)	32.2 mm
-----------------	---------

PUMO-G Grey

PUMO-W White

PUMO-Y Yellow

0° Posteriors - Lower

Width Lower (E)	34 mm
-----------------	-------

PLMO-G Grey

PLMO-W White

PLMO-Y Yellow

Essix Pontics Set

Includes 6 cards, 1 ea. type

EPOO4-W White

EPOO4-Y Yellow



Trimming Tools

TRIMMING TOOLS

Appliance Trimming Kit

- Cordless Dremel 110v **DR001**
- Polishing Brushes Combo Pack **1898C**
- Essix Lab Knife **18800**
- 25 Refill Blades for Essix Lab Knife **188RF**
- 5 1/2" Mayo Scissors **18001**
- 3 1/4" Crown & Bridge Scissors **18002**

KIT-TRIM Appliance Trimming Kit



Accentuator® Tool

- Helps ensure a Snap-in Fit
- Use to guide plastic down into the interproximal undercuts

18943 Accentuator® Tool



Cordless Dremel

- Use to trim and polish removable appliances
- Variable speed - Seamlessly adjust to the ideal speed from 8,000 to 25,000 rpm
- Lithium Ion Battery - USB Charging with Battery Life Indicator
- Portable & Lightweight
- EZ Twist Nose cap for quick accessory changes
- Two-year manufacturer's warranty

DR001 Cordless Dremel 110v



Essix® Lab Knife

- Use for cutting or trimming plastic appliances

18800 Essix® Lab Knife

188RF 25 Refill Blades

18KIT Essix® Lab Knife & 25 Refill Blades



5 ½" Mayo Scissors

- Ideal for cutting the labial outline on Essix® appliances with minimal jagged edges
- The curve of the scissors follows the curve of the arch
- Autoclavable

18001	5 ½" Mayo Scissors
18003	Combo: 5 ½" Mayo Scissors & 3 ¼" Crown & Bridge Scissors



3 ¼" Crown & Bridge Scissors

- Designed for precise trimming, especially for the palatal or lingual on full arch appliances
- Autoclavable

18002	3 ¼" Crown & Bridge Scissors
18003	Combo: 5 ½" Mayo Scissors & 3 ¼" Crown & Bridge Scissors



4" Curve Scissors

- Help obtain a clean, smooth edge on the lingual anterior region of Essix® appliances
- Ideal for bleaching trays
- Autoclavable

18004	4" Curve Scissors
--------------	-------------------



8" Universal Shears

- Excellent for quickly trimming excess plastic and more rigid materials
- Heavy-duty stainless steel
- Serrated edges
- Easy grip handles

18005	8" Universal Shears
--------------	---------------------



Diamond Discs



- Laboratory disc for separating and contouring of ceramics
- Built-in mandrel
- For straight handpiece only

	911HHP140	911HHP220
Size	14 mm	22 mm
Sided	Double	Double
Coverage (B)	2 mm	3 mm
Thickness (L)	0.15 mm	0.15 mm
Max Speed	30,000 RPM	20,000 RPM

All discs are for straight handpieces only and include a built-in mandrel unless otherwise noted.

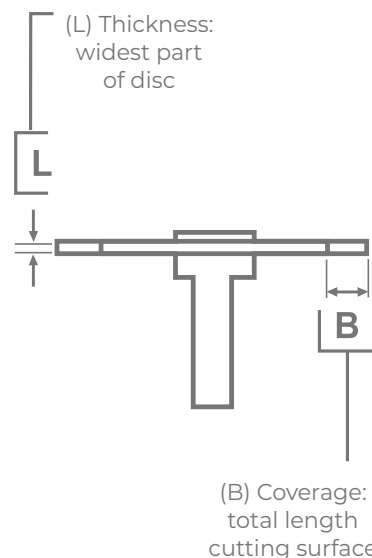
Autoclavable; do not immerse in cold-sterilization solution.

Flexview™ Curved Discs

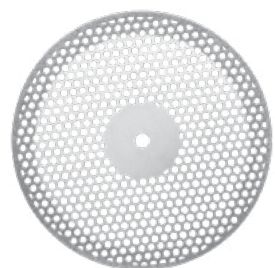


- Laboratory disc for superfine separating and contouring of ceramics
- Curved slots provide visibility
- Built-in mandrel
- For straight handpiece only

	983HP220
Size	22 mm
Sided	Double
Coverage (B)	7.0 mm
Thickness (L)	0.10 mm
Max Speed	20,000 RPM



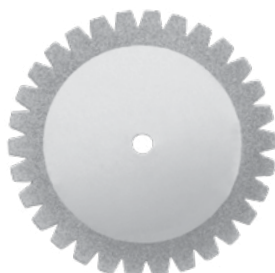
Flexview™ Mesh Discs



- Laboratory disc for ultra-fine contouring/shaping on plaster, ceramics and acrylics
- Not for breaking contact
- Built-in mandrel
- For straight handpiece only

	934HP140	934HP180	934HP220
Size	14 mm	18 mm	22 mm
Coverage (B)	2 mm	3 mm	3 mm
Thickness (L)	0.18 mm	0.18 mm	0.18 mm
Max Speed	30,000 RPM	25,000 RPM	20,000 RPM

Flexible Serrated Discs



- Laboratory disc for separating and contouring acrylics
- Built-in mandrel
- For straight handpiece only

	946HP180	946HP220
Size	18 mm	22 mm
Sided	Double	Double
Coverage (B)	3 mm	3 mm
Thickness (L)	0.20 mm	0.20 mm
Max Speed	25,000 RPM	20,000 RPM

Discs are for lab use only and are not intended for use on patients.

Sports Mouthguard Trimming Bur

- Use to efficiently achieve smooth edges after trimming away excess plastic
- Follow with Polishing Brushes for fine contouring and smoothing
- 2.35mm shank; coarse grit

MGTB-1 Pack of 5



Finishing Liquid

- Rub on completed custom sports mouthguards for a high-quality finish
- Contains natural eucalyptus

4466N 250ml Bottle

Shipped via ground delivery only



Trimming Burs

- Trim plastic appliances easily and effectively
- Straight handpiece only; max. speed 10,000 rpm

18979N Narrow, Head Size: 2.3 mm x 23 mm



Trimming Wheel

- Trim plastic appliances with this high-quality, rigid one-piece tool
- 10mm head size; 0.5 mm thickness
- Max. speed 10,000 rpm

18320 Trimming Wheel



Micromotor

- Use with burs and polishing brushes to finish removable plastic appliances quickly
- 0-35,000 rpm non-stage speed system
- Variable speed foot control; forward and reverse
- One-year warranty

207MM-110 110v/220v



Polishing Brushes

- Ideal for polishing edges of plastic appliances
- Scotch-Brite® material pre-mounted on mandrel
- Use with Cordless Dremel; max. speed 5,000 rpm

Scotch-Brite® is not a trademark of Dentsply Sirona.

18981	(12) Coarse
18982	(12) Medium
18983	(12) Fine
1898C	Combo Pack (4) of each



Border Polishers

- Smooth edges of appliances
- Use with Cordless Dremel or slow-speed handpiece at a maximum of 10,000 rpm

18973	Coarse Grit
18972	Medium Grit
18971	Fine Grit
18970	Set (1) ea. grit



Trim-Rite® Release Agent^{1,2}

- Helps avoid broken models
- Spray the cast to ensure a clean separation of the working cast from the thermoformed plastic
- Works with all thermoforming plastics
- Formulated not to turn plastic yellow

21004	12oz can
--------------	----------



Freeze Spray Coolant^{1,2}

- Provides enhanced adaptation
- Use to cool plastic after thermoforming to prevent malformation of plastic
- Without this rapid cooling, lingual or palatal edge may lift
- Also used to increase flexibility on thermal-activated arch wires

22000	10oz can
22000-12	(12) 10oz cans



¹ Shipped via ground delivery only
² Product is not CE marked



Thermofforming Equipment



Drufomat® Scan Pressure Machine

- Fabricate top-quality nightguards, sports mouthguards, retainers, and more
- Easy operation: barcode scanner programs heating and cool-down times
- Variable pressure of up to 6 bars (87 psi) produces excellent internal adaptation
- Vertical forming design ensures consistent results
- Dimensions: 18.1"h x 11.4"w x 11.4"d
- Two-year warranty

3300	Drufomat Scan, 115v, Red
3300S	Drufomat Scan, 115v, Silver

Free With Machine

- Guidebook
- Quick Connection Kit
- Plastics Guide
- Plastic Sample Kit Includes: Essix ACE Plastic, Essix C+ Plastic, Essix Sports Mouthguard Material



Optional Pressure Polymerization Insert

- Pressure pot for cast flasks (without water)
- For repairs or extensions of dentures (with water)

3227	Optional Pressure Polymerization Insert
-------------	---



Optional Granules

- Allows use of models with higher or untrimmed bases when thermoforming
- Two bottles of granules are required to fill the F insert reservoir.

4282	Optional Granules
-------------	-------------------



Funky Tool

- Use the Funky Tool with the Drufomat Scan to create custom plastic sheets
- Mix and match colors to create totally awesome patterns
- Let your patients choose their favorite team colors
- There are all sorts of funky things you can do!
- Six-piece set includes Cutting Table, Cutting Guide, Heating Pan, Chimney, Unit Adapter, and Pressing Lid

3229	Funky Tool
-------------	------------



Drufomat is not a registered trademark of Dentsply Sirona.



We're excited to share how you can put our high quality products and solutions to work for you to expand your services and grow your practice.

For more information contact your Dentsply Sirona Representative or visit us online at [dentsplysirona.com](https://www.dentsplysirona.com)

