

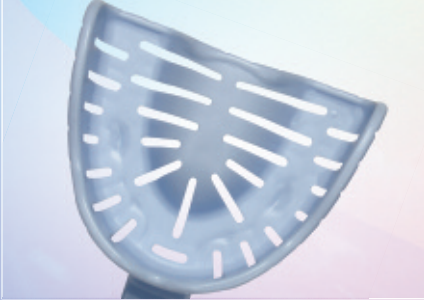
A custom shape: created by you

Transform™

HEAT MOULDABLE IMPRESSION TRAYS



TRANSFORM IMPRESSION TRAYS ARE MADE FROM A HEAT MOULDABLE MATERIAL WHICH ALLOWS THEM TO BE MOULDED TO CREATE PRECISE PRIMARY IMPRESSIONS WHICH LEADS TO INCREASED QUALITY IN SUBSEQUENT STAGES.



Transform trays help overcome the clinical challenge of taking impressions where unusual soft tissue, bone shape and tooth position exists.

Made from bio-degradable material, the single-use impression tray increases comfort for the patient and can be conveniently moulded chair-side in less than 60 seconds.



To enable moulding, the selected part of the tray should be dipped in hot water at 70°C for 20 seconds, at which point the material will become soft and malleable. The material can be moulded to the desired shape, retain in this position until material becomes rigid after 10 seconds. The material will retain the exact moulded shape and maintain its full strength. Heat moulding in the mouth is not recommended as there may be difficulties if there are undercuts. The recommended technique is to assess the features in the mouth, heat the tray and adapt by hand out of the mouth.

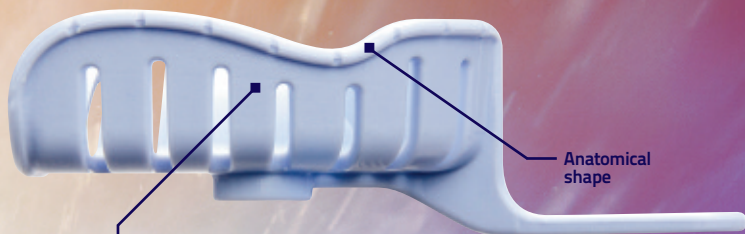


“ Negates the need for special trays when used with or without impression compound, easy to use, easy to adapt into surgery use. No need for hot water baths, just a kettle can heat water. They are retentive with the grooves, that are placed so well, that they aid in the mouldability. Great for the 2-stage technique with PVS impressions for accurate impressions in orthodontic cases, as well as STO cases, crown, bridge and implant cases. Great for accuracy in diagnostic impressions for accurate mounted models. ”



PEGASUS

Part of the
Pegasus Range of
Dental Products



Anatomical
shape

Made from
heat-mouldable
material

Central pad allows
use of finger or
instrument to
apply pressure

Integral handle
with thumb pad

Finger pads allow
even application
of pressure

Good retention
from slots

“...trays which pay serious attention to human anatomy and can lead to dentures which conform to the space naturally available to them.”

Dr John Besford BDS, PhD, MFGDP(UK)

AVAILABLE IN 3 COLOUR-CODED SIZES IN DENTATE AND EDENTULOUS SHAPES

Pack
Size:
12

No.6 Small
Upper Dentate



No.4 Medium
Upper Dentate



No.2 Large
Upper Dentate



No.12 Small
Upper Edentulous



No.10 Medium
Upper Edentulous



No.8 Large
Upper Edentulous



No.5 Small
Lower Dentate



No.3 Medium
Lower Dentate



No.1 Large
Lower Dentate



No.11 Small
Lower Edentulous



No.9 Medium
Lower Edentulous

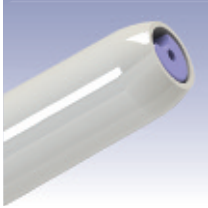


No.7 Large
Lower Edentulous





PEGASUS



Pro-Tip[®] TURBO



Pro-Matrix[®]



inSafe



ALMA
The measure of successful dentistry



Astek
INNOVATIONS

Astek Innovations Ltd

Astek House | Atlantic Street | Altrincham | Cheshire | WA14 5DH | United Kingdom

Telephone +44 (0)161 942 3900 | Fax +44 (0)161 942 3901 | Email info@astekinnovations.co.uk

www.astekinnovations.co.uk